

Rittal – The System.

Faster – better – everywhere.

Enclosure reinforcement rigid – CP 6106.110

Date : Jan 28, 2019

ENCLOSURES

POWER DISTRIBUTION

CLIMATE CONTROL

IT INFRASTRUCTURE

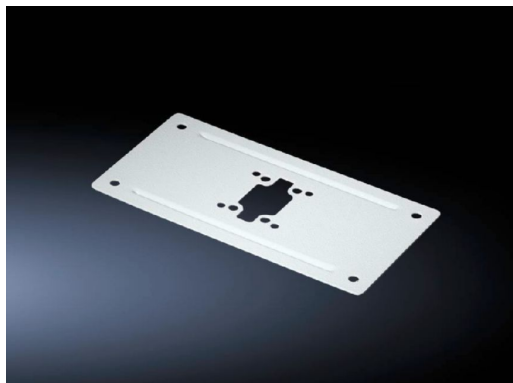
SOFTWARE & SERVICES

FRIEDHELM LOH GROUP



Enclosure reinforcement rigid – CP 6106.110

created: 28.01.2019 build on www.rittal.com/uk-en



Product description

Description:	For external or internal reinforcement of enclosures of a corresponding size. Smaller enclosures may also be mounted directly without reinforcement.
Installation options:	for support arm connection Ø 130 mm
Material:	Sheet steel
Supply includes:	Assembly parts for the enclosure and support section plus 2 seals.

Product features

To fit:	Width: ≥ 300 mm Depth: ≥ 150 mm
Packs of:	1 pc(s).
Weight/pack:	0.9 kg
EAN:	4028177698420
Customs tariff number:	73269098
ETIM 6.0:	EC002535
ETIM 5.0:	EC002534
eCl@ss 8.0/8.1:	27182604

eCl@ss 7.0/7.1: 27182604

eCl@ss 6.0/6.1: 27182604

eCl@ss 5.1/5.1.4: 27189242

Product description: CP Enclosure reinforcement, rigid, CP 60, from enclosure dimensions: 300x150 mm
